



# KEYS TO A FUTURE WITHOUT YOUTH HOMELESSNESS: COMMUNITY MEETING

March 7, 2018

**Meredith Hicks**, Planning & Policy Director  
Lighthouse Youth and Family Services

**Jen Best**, Continuum of Care Director,  
Strategies to End Homelessness

**Ryan Hall**, Youth Program Coordinator  
Strategies to End Homelessness

# What are we going to do today?

- Background of the Youth Homeless Demonstration Project (YHDP)
- Overview of the KEYS plan to end youth homelessness
- Role of Youth in planning and implementation
- Review of major project concepts
- Ideas on how you can get involved
- Upcoming KEYS funding process





# Background and History

- 2010 USCIH presented Opening Doors: The Federal Strategic Plan to Prevent and End Homelessness. Goal to end homelessness by 2020.
- September 2016: HUD releases a Notice of Funding Availability for \$33 million to plan and implement innovative strategies to end youth homelessness.
- November 2016: STEH and LYFS partner to apply to be a Youth Homelessness Demonstration Project site.
- January 2017: Cincinnati/Hamilton County selected as 1 of 10 communities.
  - Funding required each community to develop a Comprehensive Community Plan to end youth homelessness by 2020.
  - HUD approved plan will result in \$3.8 million (over 2 years) in new CoC funds targeted towards ending youth homelessness.
- March – January 2017: KEYS to a Future Without Youth Homeless plan is finalized.
- January 2018: KEYS to a Future Without Youth Homeless approved by HUD.

# Why Focus on Youth Homelessness?



- Prevent chronic homelessness.
- Prevention can help avoid further trauma – closing a circle of trauma and housing instability.
- Youth with more connections to family and natural support systems are less likely to return to homelessness.
- Many youth need minimal assistance to end homelessness.

# Our Approach



- Establish the voice of those with lived experience as the experts in developing innovative solutions.
- Make the system easier to navigate.
- Develop consistency in youth experience between systems and programs.
- Develop programs that are unique to Hamilton County.
- Demonstrate effectiveness of innovation at a systems level.
- Outcomes demonstrate reduction in youth homelessness.

# Core areas of success:

- Stable Housing
- Permanent Connections
- Education and Employment
- Social and Emotional Well-Being



# Goals



- Prevent homelessness before it occurs.
- Provide safe and appropriate shelter and services to all willing youth who are experiencing unsheltered homelessness.
- Reduce the length of homeless episodes experienced by youth.
- Ensure that youth exiting the homeless system have the supports they need to remain housed.
- Encourage innovation, system change and sustainability within the CoC and larger community.

# Youth Partnership

- Planning and implementation must have authentic youth voice.
- The Youth Advisory Council meets separately and also contributes and participates in Youth Workgroup and implementation teams.
- NEW – creation of 2 Youth Lead positions at LYFS.





# CoC Youth Workgroup



- Oversees implementation of the plan.
- Makes sure youth who have experienced homelessness have their voice heard.
- Workgroup chair is Runaway Homeless Youth Representative of the Homeless Clearinghouse.
- Homeless Clearinghouse makes all final approvals of recommendations formulated in Youth Workgroup.

# Decision Making Structure



## Continuum of Care Board (Homeless Clearinghouse)

Review and makes final approval of CoC Youth Workgroup recommendations

## CoC Youth Workgroup

Review input and develops recommendations for approval by CoC Board

## Implementation Teams

Formed as needed to provide input and expertise to the CoC Youth Workgroup

# Concepts in the Plan



Preliminary Matches for HUD Funding	System Improvements to Existing Models	Partnership Opportunities	Additional Funding & Support Required
Youth Dedicated Service Team	Safe Shelter	Scholar House	Transportation Initiatives
Homelessness Prevention	Street Outreach	Purple Umbrella Campaign	Creation of mobile application for increased system navigation
Progressive Engagement Housing (serving all populations)	Data Collection	Housing Campus for Victims of Human Trafficking	One-Stop Shop to address all needs in one place
Housing Specialists	Cultural Competency, Trauma Informed Care, and Positive Youth Development	Site-Based Housing for Pregnant Women	
Data Sharing Capabilities	Youth Centered Coordinated Entry Improvements	Employment	
Flexible Funding to Support Community Infrastructure			



# Evidence-Based Framework

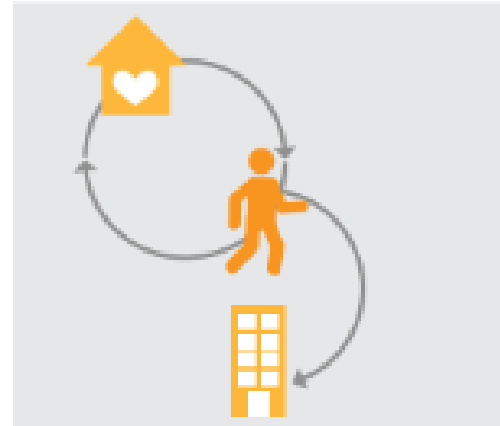
- System Cultural Competency
- Housing First methodologies
- Trauma-Informed Care
- Positive Youth Development

# Innovation with Limitations

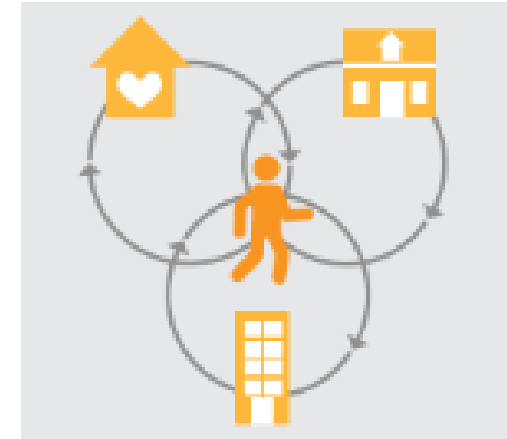
- Consistent prevention & diversion strategies.
- Progressive Engagement philosophies with flexible housing opportunities.
- Consistent supportive services while moving through programs.
- Collaboration with other systems.
  - Child Welfare, Juvenile Justice, Education, etc.
- Consistent aftercare support.



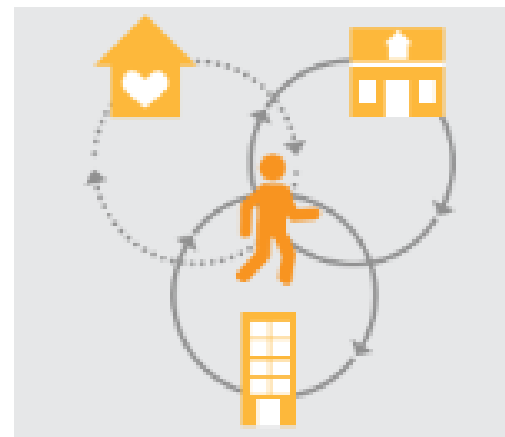
# What Does Homelessness Look Like for Youth?



Temporarily Disconnected



Unstably Connected



Chronically Disconnected



# By-Name List



- One list that identifies all of the homeless and at-risk youth living in Hamilton County.
- Identifies any youth who may be in danger of returning to homelessness and establishes intervention plan.



# Prevention & Diversion



- **Prevention:** To keep individual in current housing
  - Preventing at-risk youth likely to be homeless in the near future.
  - Short-term financial assistance.
  - Housing assistance with aftercare
- **Diversion:** Relocate individual to other stable housing
  - When financial assistance is not enough to resolve housing crisis.
  - Temporary or permanent reconnection to family or caregiver until permanent housing can be achieved.

# Prevention & Diversion

- Scenario #1
- Scenario #2



# Reconnection

- Assisting young people on the verge or newly homeless to reconnect with natural supports.
- Reconnection as part of prevention and diversion strategies.
- “Front Door” services at shelters for any youth who indicate that they wish to - or are permitted to - return home to family.
- Utilizes family reconnection strategies and specialization to help family overcome relationship, behavioral and, potentially, financial challenges to keep youth housed.
- Goal is permanent housing or permanent reconnection through progressive engagement model



# Reconnection

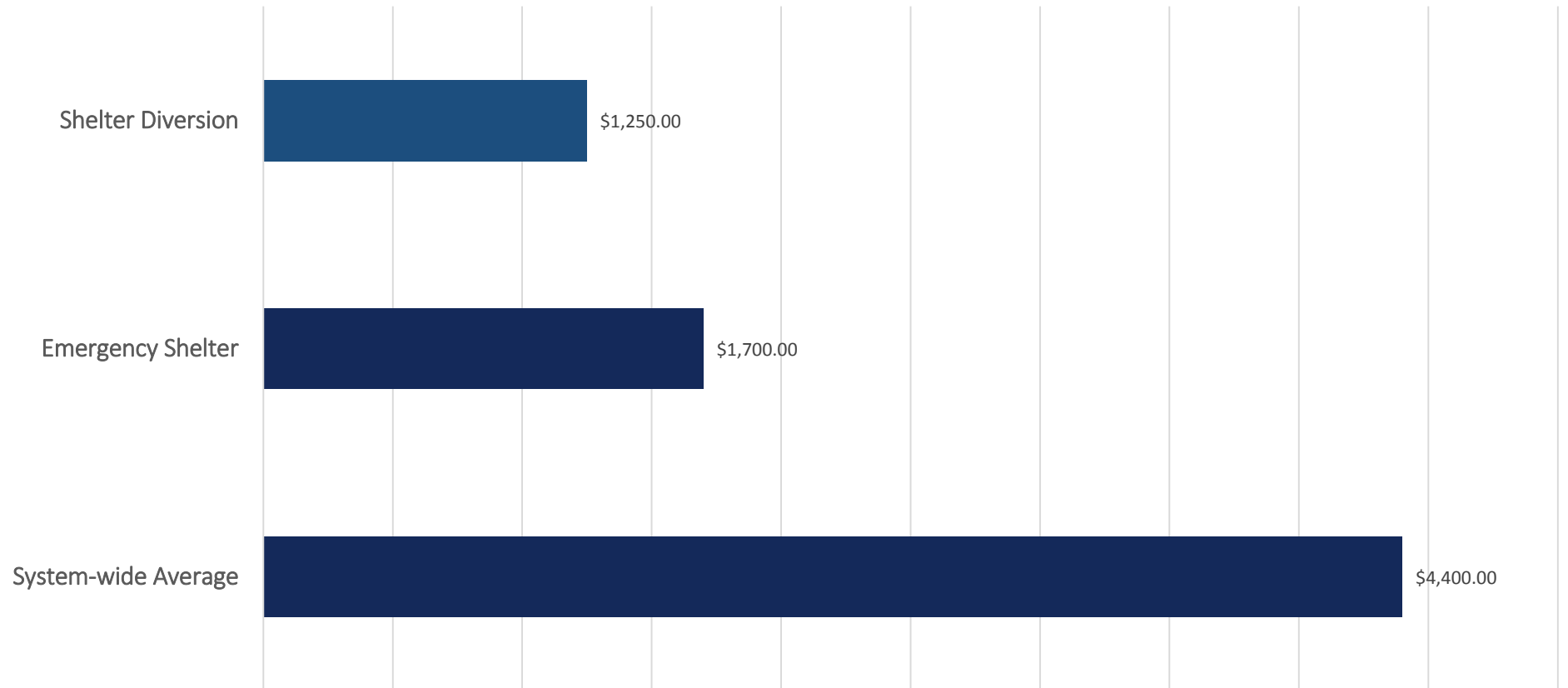
- Scenario #3



# Homeless Prevention



Average Cost of Services per Person



# Low Barrier Shelter



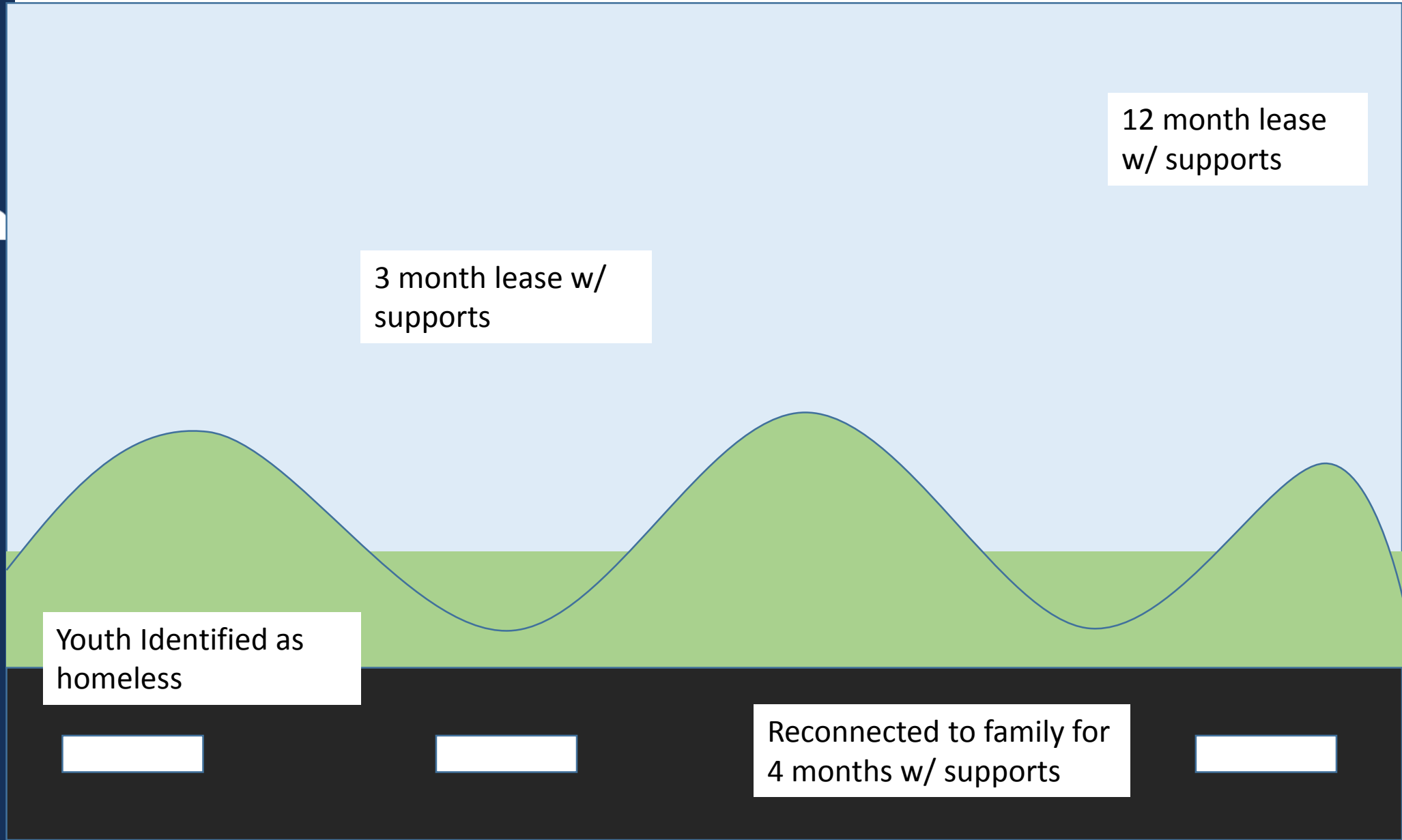
- Removing as many pre-conditions as possible.
- Welcoming guests as they are.
- Having clear and simple behavioral expectations that apply to everyone.
- Staff are trained in Trauma-Informed Care and de-escalation techniques.
- Engage specifically with people with high barriers to housing through Street Outreach.

# Progressive Engagement Housing



- Housing that is client-choice driven and flexible enough to transition between programs/options.
- Builds in a “try it and see” approach that does not penalize youth for needing more or less supports as situations change. Services are not tied to housing.
- Extends the “runway” to self-sufficiency
- Youth choose the level of rental support they need.
  - Tenant Based Rental Assistance w/ month-to-month rent
  - Site Based Rapid Rehousing

# Extending the Runway....



12 month lease w/ supports

3 month lease w/ supports

Youth Identified as homeless

Reconnected to family for 4 months w/ supports



# Progressive Engagement Housing



## Exit Destinations

- Market-rate or affordable housing w/ aftercare services.
- Connection to site-based housing or Housing Choice Voucher w/ aftercare services.

## Additional Housing Options

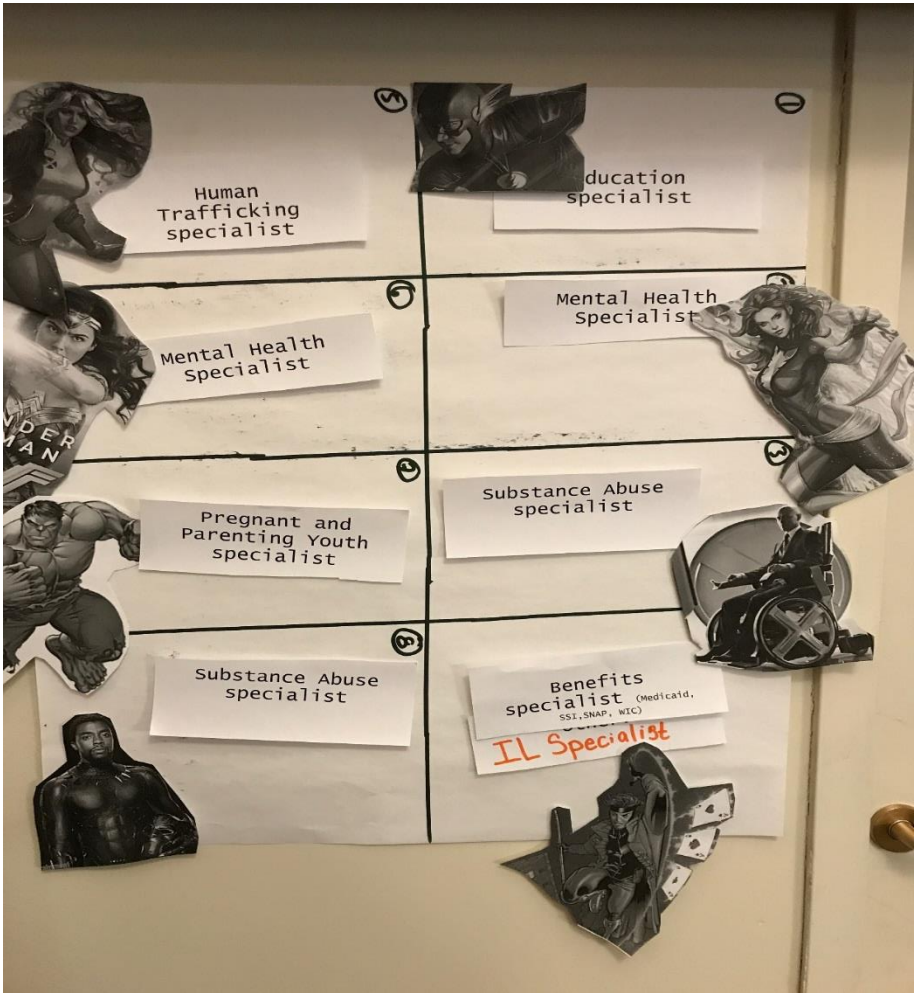
- Shared Housing

# Youth Dedicated Service Team (YDST)



- One point of contact for homeless youth as they move from homelessness into the Progressive Engagement Model.
- Modeled similar to SAMHSA-funded Coordinated Agreement to Benefit Homeless Individuals (CABHI) team.
- Provides aftercare/homeless prevention services for up to 2 years.

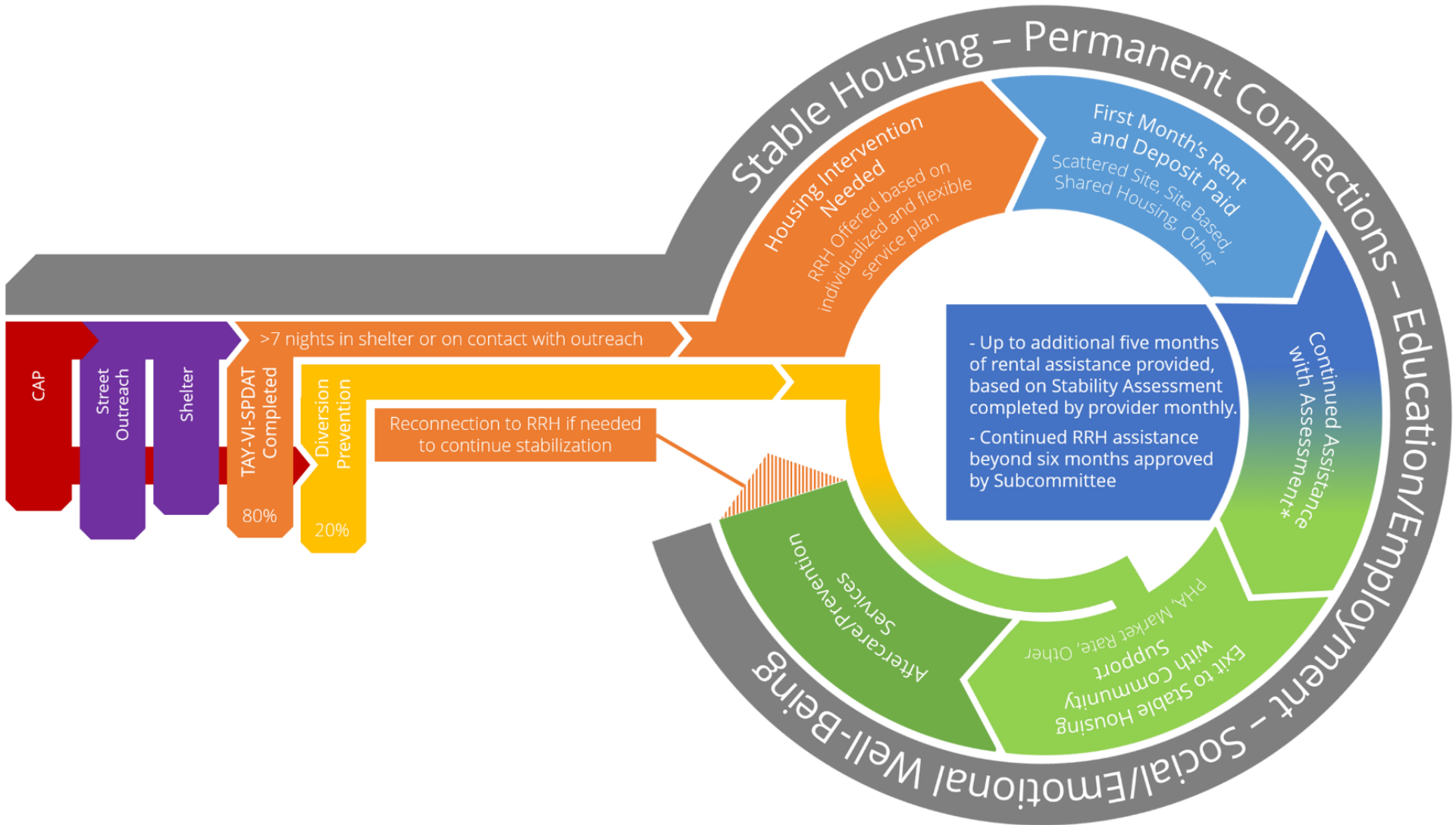
# Youth Dedicated Service Team



# YDST – Housing Navigators

- Housing Navigators:
  - Recruit new landlords.
  - Build and maintain positive relationships with landlords.
  - Act as first responders/mediators when tenant issues arise.
  - Educate youth on tenant rights and responsibilities.
  - Navigate lease signing and move-in experience.





# Get Involved!



- **Youth Advisory Committee**
  - First of Friday of every month 3:00pm-5:00pm - 401 E. McMillan (Foster Care Entrance)
    - Open to all youth ages 18-24 with lived experience with homelessness
- **Youth Workgroup**
  - 2<sup>nd</sup> Monday of every month – 3:00pm-4:30-pm – Lighthouse Youth and Family Services – 3<sup>rd</sup> Floor
  - March 03.21 @3pm
  - COC Workgroup – provides feedback on YHDP implementation
  - Open to all community members
- **Implementation Teams: Data & CQI, Policy and Planning.**
  - Contact Ryan Hall – [rhall@end-homelessness.org](mailto:rhall@end-homelessness.org) for more details.



- Request for Proposals  
Coming Soon....



- For More information/questions please contact Ryan Hall – [rhall@end-homelessness.org](mailto:rhall@end-homelessness.org)
- Thanks!